

Paranco con carrello monotrave S2

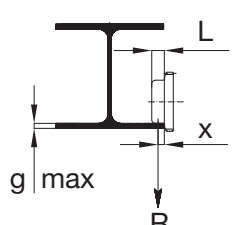
Hoist with monorail trolley S2

XM 308 / 312 / 316 / 525

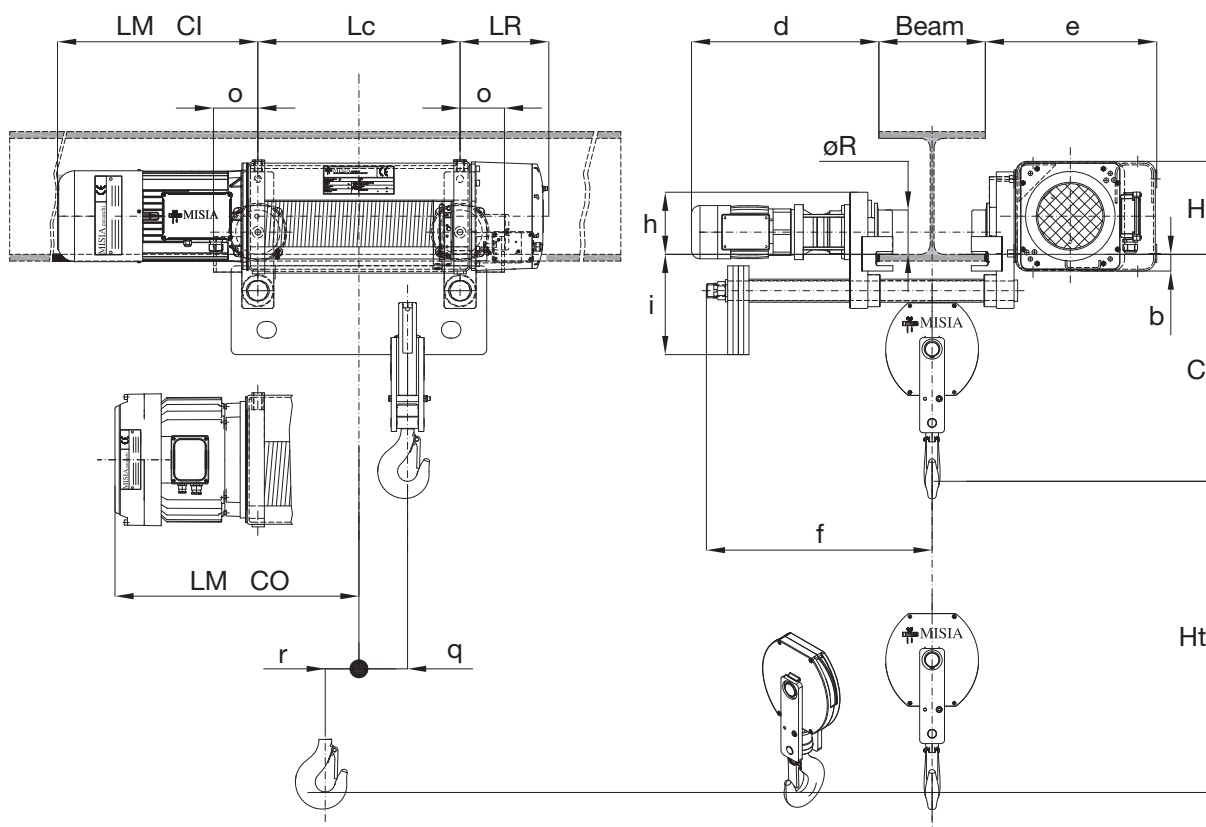
S2 2 TIRI DI FUNE (2/1) - 2 ROPE FALLS (2/1)
Tipo 83 CARRELLO MONOTRAVE A INGOMBRO RIDOTTO
MONORAIL TROLLEY LOW HEADROOM



Diametro ruota Wheel diameter	x	L	g max
mm	mm	mm	mm
125	20	40	28



R = Per single wheel



Dimensioni fisse

Fixed dimensions

Portata WLL	Gruppo Group	Paranco Hoist type	C	H	e	d	h	i	øR	b	f*	o	Larghezza min ala trave Min flange width	Larghezza max trave per quota C Max beam flange x C quote
Kg	FEM	XM	mm	mm	mm	mm	mm	mm	mm	mm	mm	mm	mm	mm
1000	3m	308 - 2/1	700	242	470	430	140	290	125	70	620	100	110	300
1600	2m	308 - 2/1	700	242	470	430	140	290	125	70	620	100	110	300
2500	2m	312 - 2/1	750	250	475	430	140	290	125	70	620	100	110	300
3200	2m	316 - 2/1	750	250	475	430	140	290	125	70	620	100	110	300
5000	2m	525 - 2/1	780	305	550	485	140	340	125	75	650	100	110	300

Nota: 1) Per le ali travi superiori a quelle indicate, la quota "C" (ingombro gancio) aumenta di 16 mm ogni 10 mm di larghezza ala trave.

* La quota "f" indicata è valida per ala trave di 300 mm; con ala diversa, aumenta o diminuisce di metà della differenza ala trave.

Note: 1) For beam sizes wider than those shown, the "C" dimension (hook to girder min. size) increases of 16 mm every 10 mm of wider beam size.

* The dimension "f" shown is valid for beam size 300 mm; with different beam size it increases or decreases of half of the difference of the beam size.

Dimensioni variabili

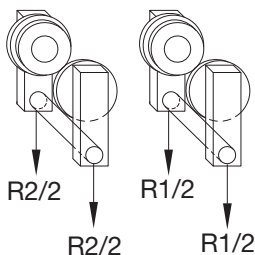
Variable dimensions

Portata WLL	Gruppo Group	Paranco Hoist type	Corsa gancio Hook travel	Lc	q	r	LMCI				LMCO				LR	Peso Weight
Kg	FEM	XM	m	mm	mm	mm	mm N	mm V	mm NA	mm VA	mm N	mm V	mm NA	mm VA		Kg
1000	3m	308 - 2/1	10	395	91	61	460	460	490	490	315	375	385	420	200	360
			14	520	154											390
1600	2m		20	700	244											430
			26	885	377											470
2500	2m	312 - 2/1	10	440	90	77	460	460	490	565	375	420	420	420	250	425
			14	570	155											455
			20	775	258											500
			26	975	358											545
3200	2m	316 - 2/1	10	440	90	77	460	565	500	565	375	/	420	/	250	440
			14	570	155											470
			20	775	258											520
			26	975	358											560
5000	2m	525 - 2/1	10	455	90	78	600	600	600	650	415	465	460	505	270	625
			14	590	157											660
			20	795	260											720
			26	995	360											790

Reazioni statiche

Static reactions

Lato motore Motor side
Lato riduttore Reducer side



$$\text{Carico sulla singola ruota} = \frac{R1}{2} \quad \frac{R2}{2}$$

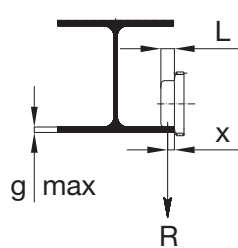
Load on the single wheel = $\frac{R1}{2} \quad \frac{R2}{2}$

Paranco Hoist type	Portata WLL	Corse gancio Hook travel							
		H10		H14		H20		H26	
XM	Kg	R1 daN	R2 daN	R1 daN	R2 daN	R1 daN	R2 daN	R1 daN	R2 daN
308	1000	917	443	997	390	1069	357	1118	342
308	1600	1355	605	1474	513	1578	448	1647	413
312	2000	1631	790	1783	670	1930	570	2020	522
312	2500	1983	938	2169	784	2346	654	2454	588
316	3200	2485	1152	2717	952	2937	779	3069	689
525	3200	2563	1260	2802	1056	3029	891	3176	813
525	4000	3122	1501	3414	1244	3691	1029	3865	924
525	5000	3819	1804	4181	1477	4518	1202	4727	1062

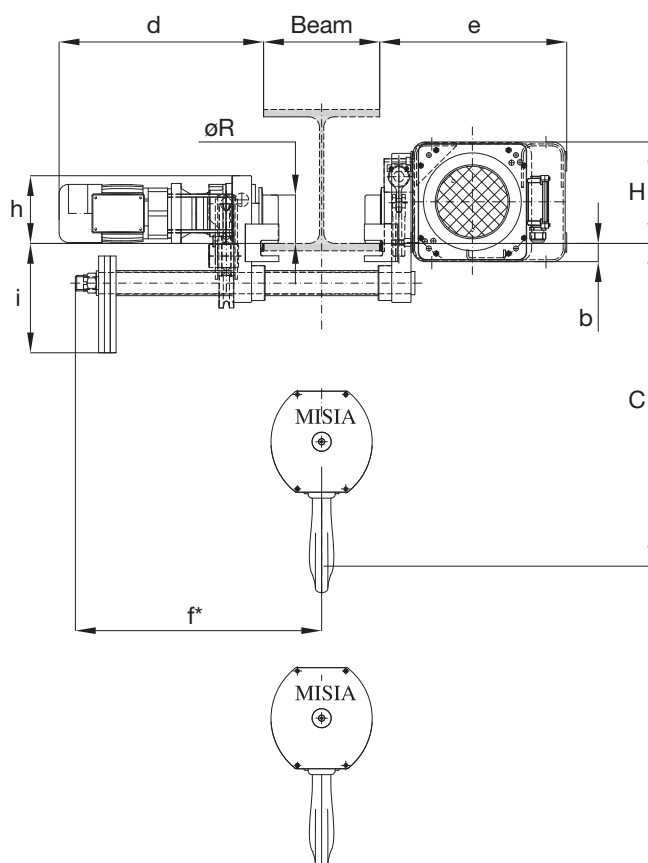
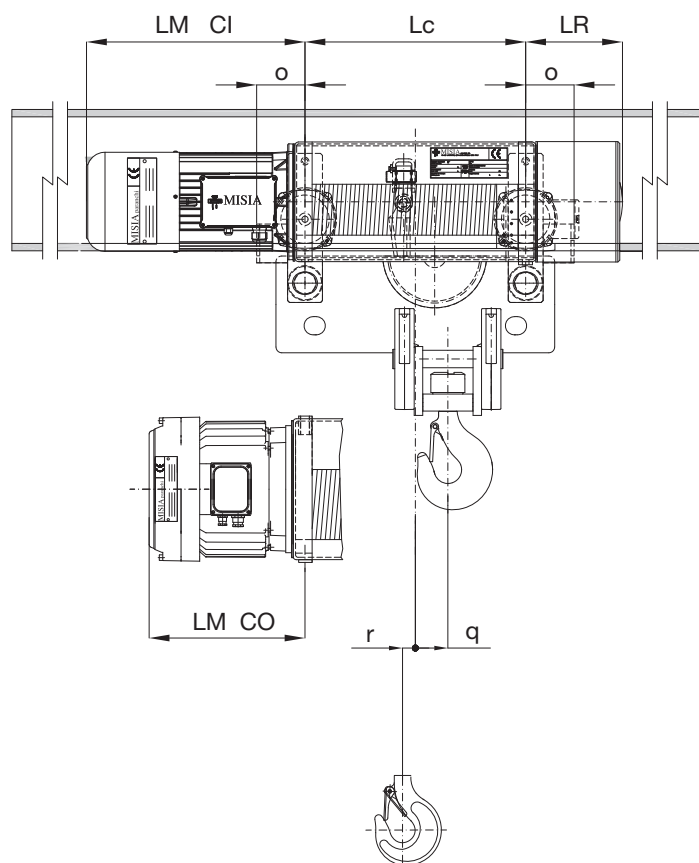
Paranco con carrello monotrave S4
 Hoist with monorail trolley S4

XM 308 / 312 / 316 / 525
S4 4 TIRI DI FUNE (4/1) - 4 ROPE FALLS (4/1)
Tipo 83 CARRELLO MONOTRAVE A INGOMBRO RIDOTTO
 MONORAIL TROLLEY LOW HEADROOM


Diametro ruota Wheel diameter	x	L	g max
mm	mm	mm	mm
125	20	40	28
155	22	45	28



R = Per single wheel



Dimensioni fisse

Fixed dimensions

Portata WLL	Gruppo Group	Paranco Hoist type	C	H	e	d	h	i	øR	b	f*	o	Larghezza min ala trave Min flange width	Larghezza max trave per quota C Max beam flange x C quote
Kg	FEM	XM	mm	mm	mm	mm	mm	mm	mm	mm	mm	mm	mm	mm
2000	3m	308 - 4/1	680	245	470	430	140	290	125	66	620	100	110	300
3200	2m	308 - 4/1	680	245	470	430	140	290	125	66	620	100	110	300
5000	2m	312 - 4/1	720	245	470	475	140	290	125	66	650	100	110	300
6300	2m	316 - 4/1	720	270	485	530	175	290	125	50	650	125	110	300
10000	2m	525 - 4/1	770	305	525	535	175	320	155	50	750	125	110	300

Nota: 1) Per le ali travi superiori a quelle indicate, la quota "C" (ingombro gancio) aumenta di 16 mm ogni 10 mm di larghezza ala trave.

* La quota "f" indicata è valida per ala trave di 300 mm; con ala diversa, aumenta o diminuisce di metà della differenza ala trave.

Note: 1) For beam sizes wider than those shown, the "C" dimension (hook to girder min. size) increases of 16 mm every 10 mm of wider beam size.

* The dimension "f" shown is valid for beam size 300 mm; with different beam size it increases or decreases of half of the difference of the beam size.

Dimensioni variabili

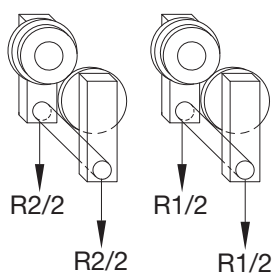
Variable dimensions

Portata WLL	Gruppo Group	Paranco Hoist type	Corsa gancio Hook travel	Lc	q	r	LMCI				LMCO				LR	Peso Weight
Kg	FEM	XM	m	mm	mm	mm	mm N	mm V	mm NA	mm VA	mm N	mm V	mm NA	mm VA		Kg
2000	3m	308 - 4/1	7	520	90	17	460	460	490	490	315	375	385	420	200	410
3200	2m		10	700	180	-28										450
		13	885	273	-75	490										
5000	2m	312 - 4/1	7	570	84	33	460	460	490	565	375	420	420	420	250	520
			10	775	187	-20										570
			13	975	287	-70										620
6300	2m	316 - 4/1	7	570	84	33	460	565	500	565	375	/	420	/	250	535
			10	775	187	-20										590
			13	975	287	-70										635
10000	2m	525 - 4/1	7	590	73	45	600	600	600	650	415	465	460	505	270	785
			10	795	176	-8										850
			13	995	267	-58										950

Reazioni statiche

Static reactions

Lato motore Motor side
Lato riduttore Reducer side



Carico sulla singola ruota = $\frac{R1}{2}$ $\frac{R2}{2}$
Load on the single wheel = $\frac{R1}{2}$ $\frac{R2}{2}$

Paranco Hoist type	Portata WLL	Corse gancio Hook travel					
		H7		H10		H13	
		R1 daN	R2 daN	R1 daN	R2 daN	R1 daN	R2 daN
XM	Kg						
308	2000	1561	848	1751	700	1873	615
308	2500	1897	1012	2129	822	2277	711
308	3200	2368	1241	2659	992	2843	845
312	4000	2872	1647	3277	1294	3515	1104
312	5000	3519	2000	4018	1553	4309	1310
316	6300	4368	2467	4990	1897	5349	1585
525	6300	4357	2725	4988	2163	5343	1873
525	8000	5417	3365	6208	2643	6649	2267
525	10000	6664	4118	7643	3208	8186	2730